

Light efficiency:

46 Lumen/Watt

Light quality:

CRI: 96.5

Color temperature:

3009 K

Output: 566 lm

Peak: 190 cd

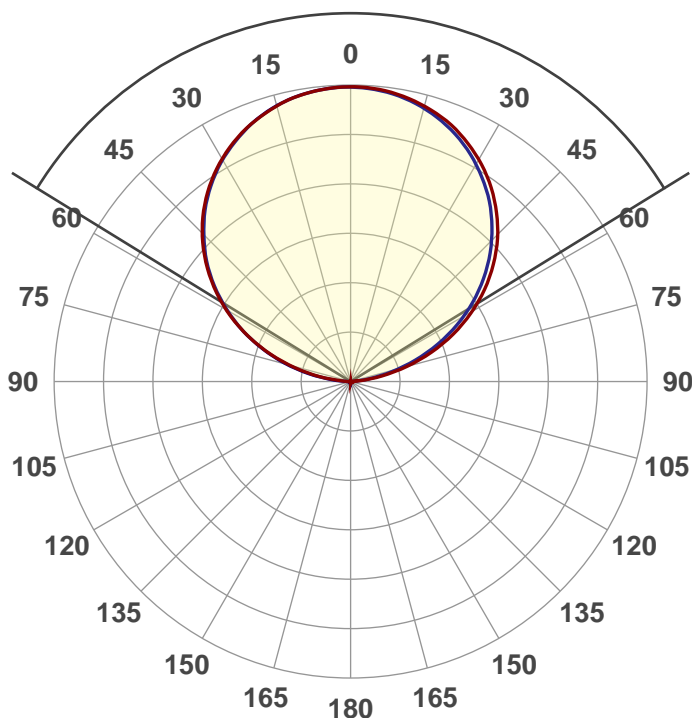
Power: 12.3 W

PF: 0.56



Beam angle

116.7°



Product name:

Flex One HO Interior 3000K

Test:

Full On (1ft of Flex)

Date and time:

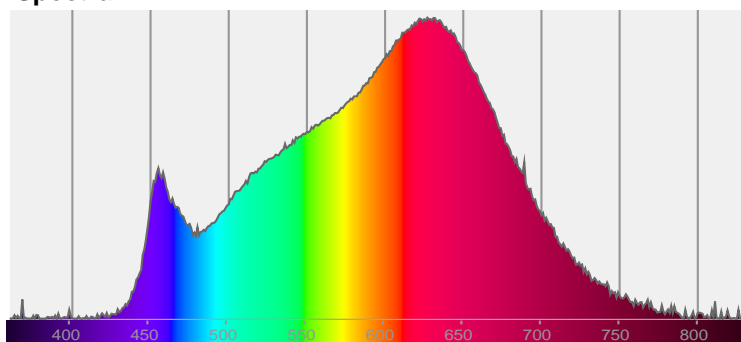
4/10/2017

Description:

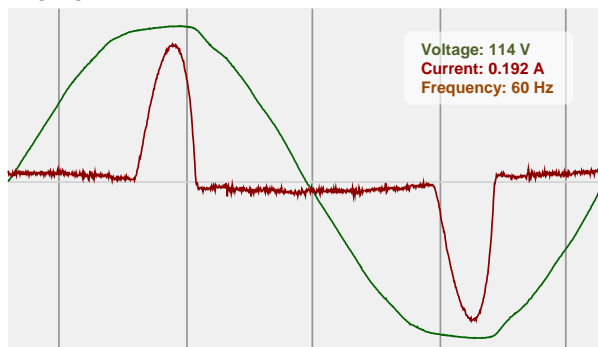


CIE 1931
x: 0.438
y: 0.406

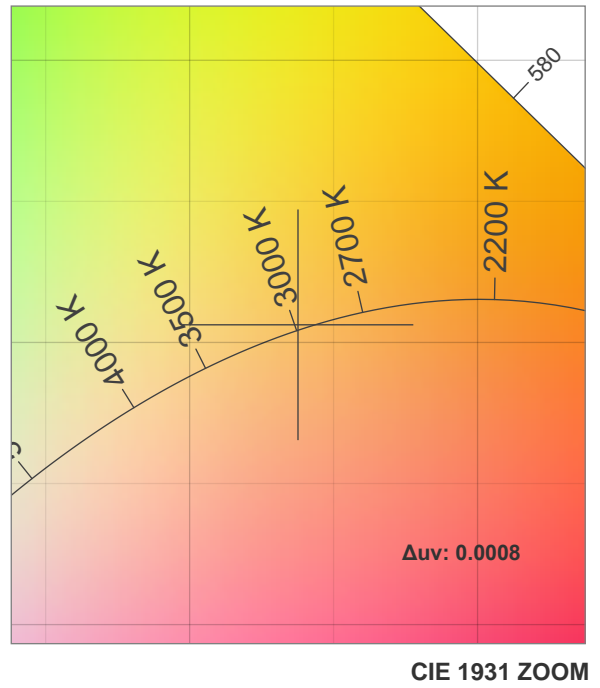
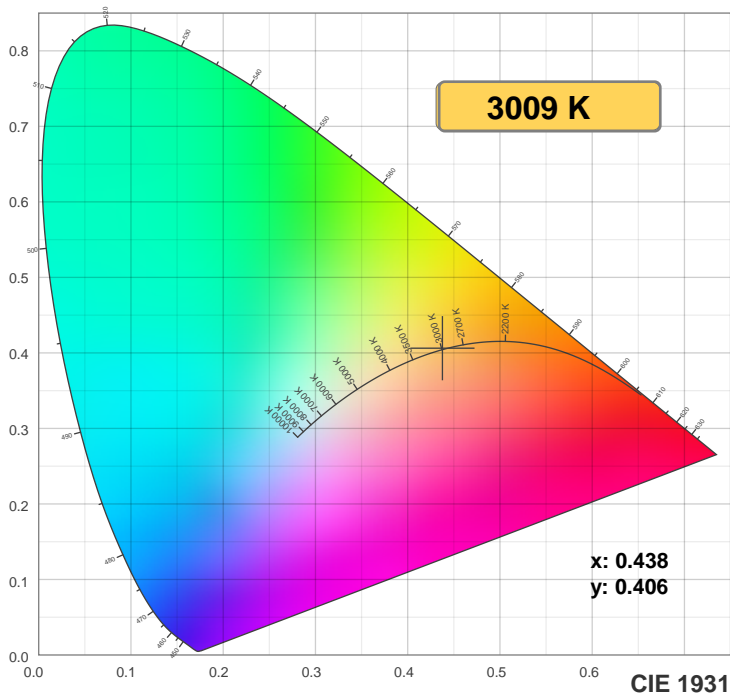
Spectra



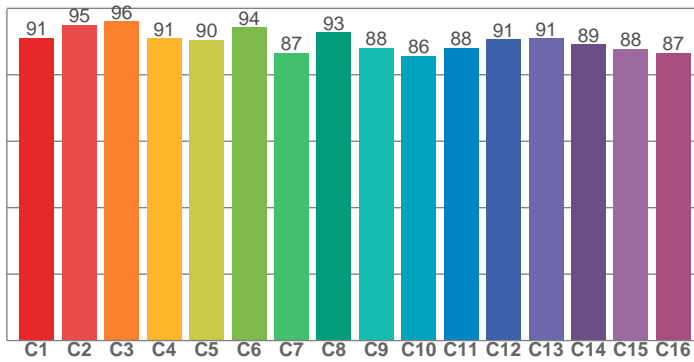
Power



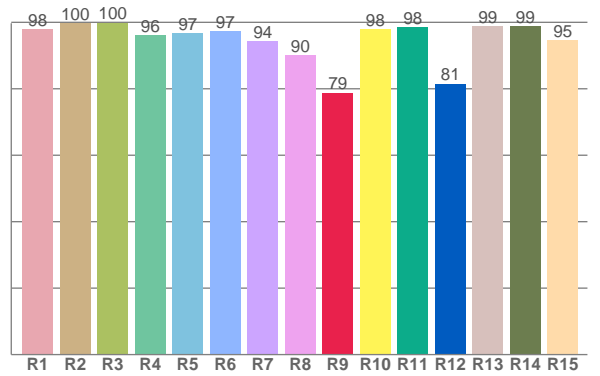
Color details



TM30: 90.5



CRI: 96.5 (R1-R8)



CRI R values, only R1-R8 are used to calculate final CRI value

R1	R2	R3	R4	R5	R6	R7	R8	R9	R10	R11	R12	R13	R14	R15
97.9	99.7	99.9	96.2	96.7	97.3	94.2	90.0	78.8	97.9	98.4	81.5	98.9	98.9	94.6

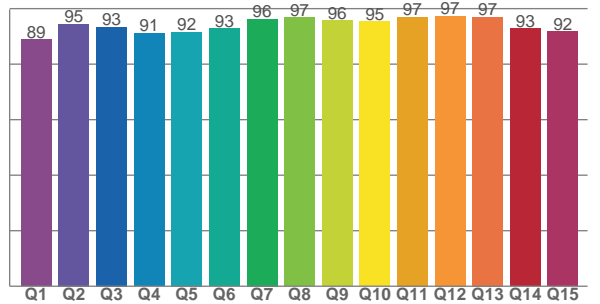
TM30 C values, 16 binned values out of total of 99 C values

C1	C2	C3	C4	C5	C6	C7	C8	C9	C10	C11	C12	C13	C14	C15	C16
91.2	95.1	96.0	90.9	90.5	94.3	86.6	92.8	88.1	85.8	88.2	90.7	91.0	89.1	87.8	86.7

CQS Q values

Q1	Q2	Q3	Q4	Q5	Q6	Q7	Q8	Q9	Q10	Q11	Q12	Q13	Q14	Q15
88.9	94.5	93.3	91.1	91.5	92.8	96.2	96.7	95.7	95.4	97.1	97.4	97.0	92.8	91.8

CQS: 93.5



Color parameters

Color temperature	Color rendering index	Red component	Color fidelity	Color gamut	Color quality scale	Color coordinate cie 1931	Color coordinate cie 1931	Color coordinate	Color coordinate	Color diviation from black body
CCT	CRI	CRI R9	TM30 Rf	TM30 Rg	CQS	x	y	u	v	Δuv
3009 K	96.5	78.8	90.5	97.3	93.5	0.438	0.406	0.250	0.348	0.0008

TM30 details

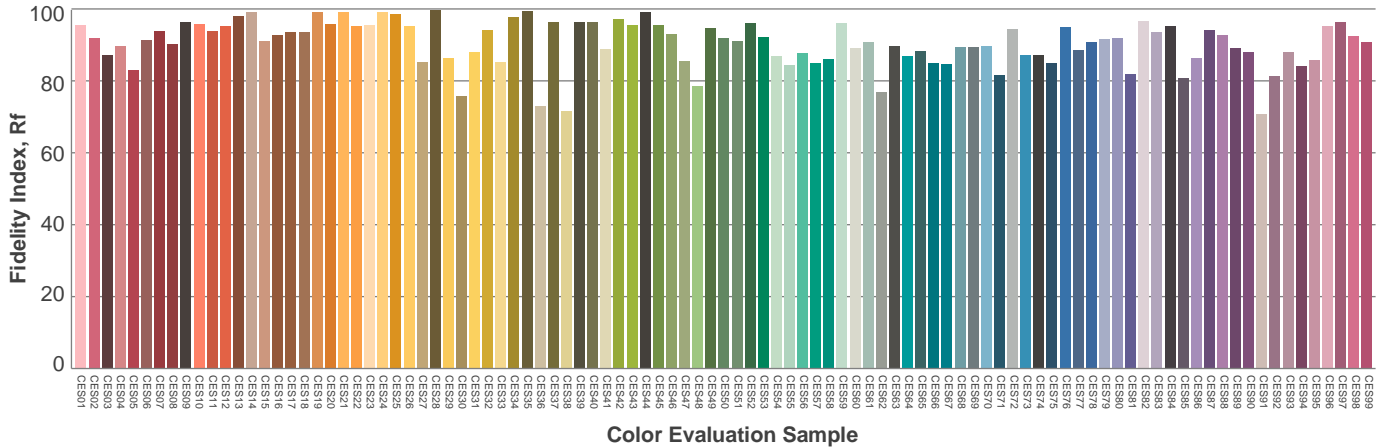
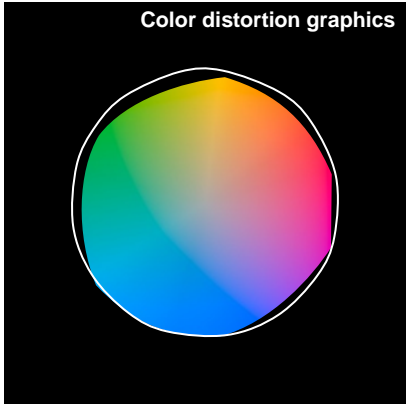
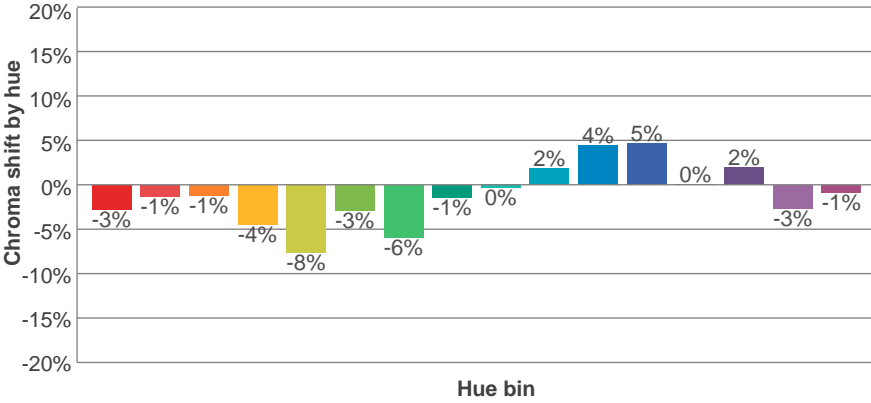
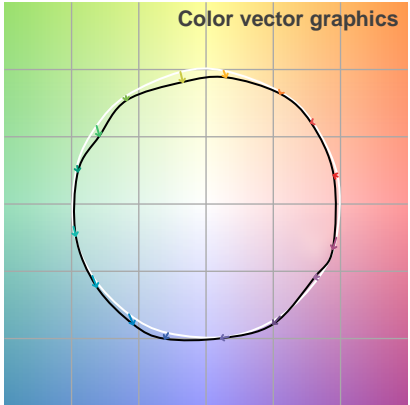
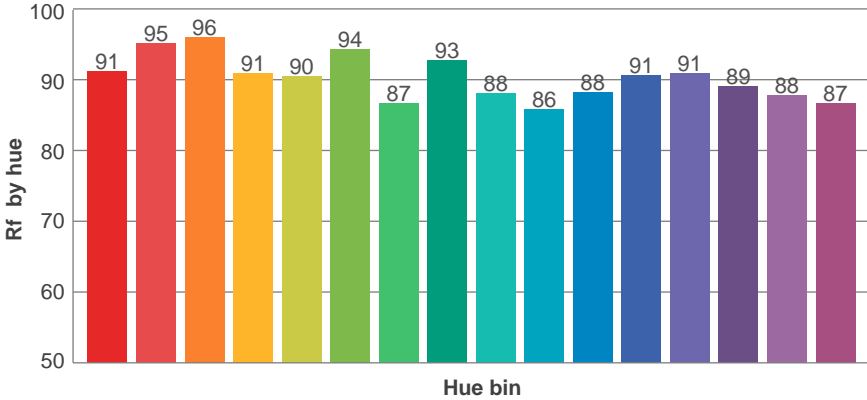
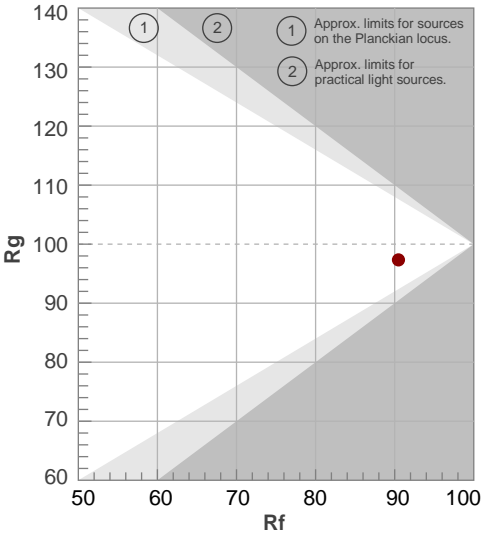
Rf 90.5

Fidelity index Rf

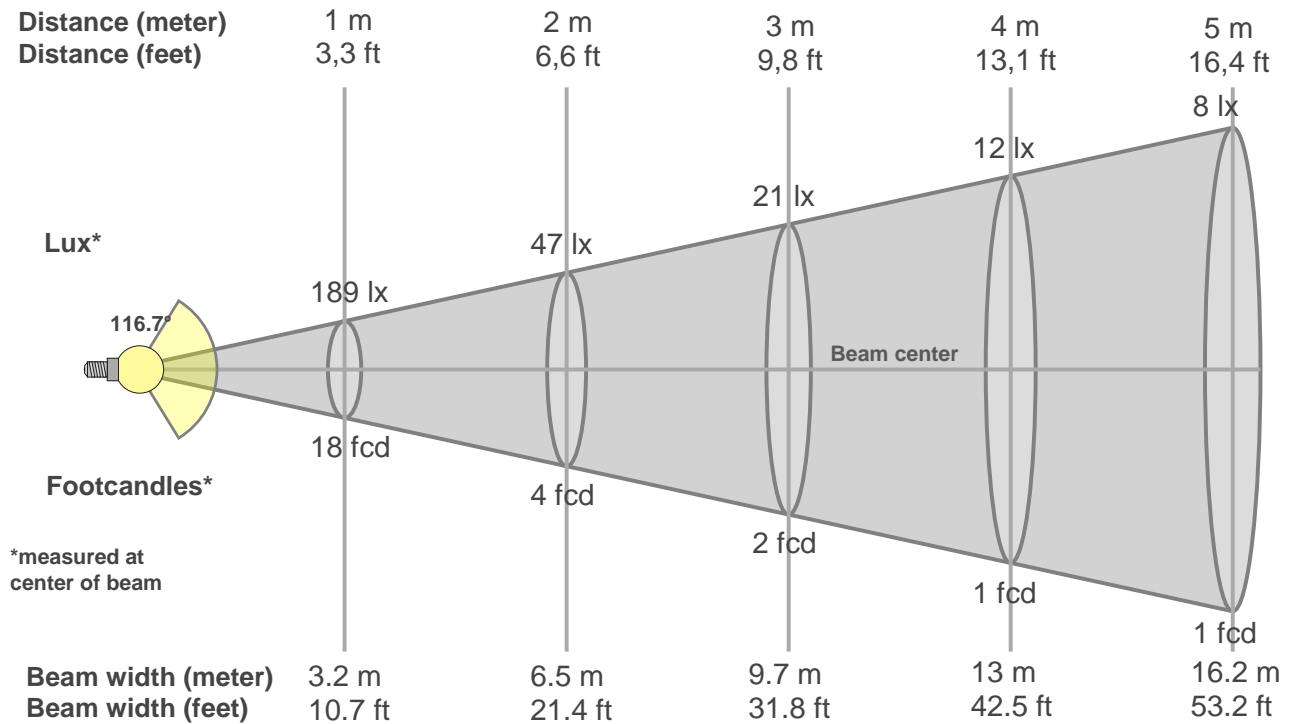
Rg 97.3

Gammut index Rg

Hue Bin	Rf	Graphic shifts (%)	
		Chroma	Hue
1	91	-3%	2%
2	95	-1%	0%
3	96	-1%	0%
4	91	-4%	-3%
5	90	-8%	0%
6	94	-3%	1%
7	87	-6%	5%
8	93	-1%	4%
9	88	0%	7%
10	86	2%	8%
11	88	4%	7%
12	91	5%	-2%
13	91	0%	-6%
14	89	2%	-7%
15	88	-3%	-3%
16	87	-1%	-9%



Beam details



Beam intensities from 1-20m

1m	2m	3m	4m	5m	6m	7m	8m	9m	10m	11m	12m	13m	14m	15m	16m	17m	18m	19m	20m
3.3ft	6.6ft	9.8ft	13.1ft	16.4ft	19.7ft	23ft	26.2ft	29.5ft	32.8ft	36.1ft	39.4ft	42.7ft	45.9ft	49.2ft	52.5ft	55.8ft	59.1ft	62.3ft	65.6ft
189lx	47lx	21lx	12lx	8lx	5lx	4lx	3lx	2lx	2lx	2lx	1lx	1lx	1lx	1lx	1lx	1lx	1lx	1lx	0lx
17.6fcd	4.4fcd	2fcd	1.1fcd	0.7fcd	0.5fcd	0.4fcd	0.3fcd	0.2fcd	0.2fcd	0.1fcd	0.1fcd	0.1fcd	0.1fcd	0.1fcd	0.1fcd	0.1fcd	0.1fcd	0fcd	0fcd

Intensities in 0° c-plane

0°	5°	10°	15°	20°	25°	30°	35°	40°	45°	50°	55°	60°	65°	70°	75°	80°	85°	90°	95°
189	189	187	183	179	173	165	156	146	135	122	108	92	76	58	41	24	8	1	0
100%	100%	99%	97%	94%	91%	87%	83%	77%	71%	64%	57%	49%	40%	31%	21%	12%	4%	0%	0%

Intensities in 90° c-plane

0°	5°	10°	15°	20°	25°	30°	35°	40°	45°	50°	55°	60°	65°	70°	75°	80°	85°	90°	95°
189	189	187	184	179	172	165	156	145	133	121	107	92	76	59	42	25	11	2	0
100%	100%	99%	97%	94%	91%	87%	82%	77%	70%	64%	56%	48%	40%	31%	22%	13%	6%	1%	0%

Intensities in 180° c-plane

0°	5°	10°	15°	20°	25°	30°	35°	40°	45°	50°	55°	60°	65°	70°	75°	80°	85°	90°	95°
189	189	187	183	179	172	165	156	145	134	120	106	90	73	56	37	20	7	0	0
100%	100%	99%	97%	94%	91%	87%	82%	77%	71%	64%	56%	48%	39%	29%	20%	11%	4%	0%	0%

Intensities in 270° c-plane

0°	5°	10°	15°	20°	25°	30°	35°	40°	45°	50°	55°	60°	65°	70°	75°	80°	85°	90°	95°
189	188	186	182	176	170	161	152	141	128	114	100	84	67	50	33	17	5	1	0
100%	99%	98%	96%	93%	90%	85%	80%	74%	68%	60%	53%	44%	35%	26%	17%	9%	3%	0%	0%

Beam angle 50%	Field angle 10%	Cutoff angle 2,5%	Intensity ratio in 120° cone	Intensity ratio in 90° cone
116.7°	161.6°	173°	0.8%	0.5%

UGR

Glare Evaluation According to UGR

p Ceiling	70	70	50	50	30	70	70	50	50	30
p Walls	50	30	50	30	30	50	30	50	30	30
p Floor	20	20	20	20	20	20	20	20	20	20
Room size X Y	Viewing direction at right angles to lamp axis					Viewing direction parallel to lamp axis				
n/a	n/a	n/a	n/a	n/a	n/a	n/a	n/a	n/a	n/a	n/a
n/a	n/a	n/a	n/a	n/a	n/a	n/a	n/a	n/a	n/a	n/a
n/a	n/a	n/a	n/a	n/a	n/a	n/a	n/a	n/a	n/a	n/a
n/a	n/a	n/a	n/a	n/a	n/a	n/a	n/a	n/a	n/a	n/a
n/a	n/a	n/a	n/a	n/a	n/a	n/a	n/a	n/a	n/a	n/a
n/a	n/a	n/a	n/a	n/a	n/a	n/a	n/a	n/a	n/a	n/a
n/a	n/a	n/a	n/a	n/a	n/a	n/a	n/a	n/a	n/a	n/a
n/a	n/a	n/a	n/a	n/a	n/a	n/a	n/a	n/a	n/a	n/a
n/a	n/a	n/a	n/a	n/a	n/a	n/a	n/a	n/a	n/a	n/a
n/a	n/a	n/a	n/a	n/a	n/a	n/a	n/a	n/a	n/a	n/a
n/a	n/a	n/a	n/a	n/a	n/a	n/a	n/a	n/a	n/a	n/a
n/a	n/a	n/a	n/a	n/a	n/a	n/a	n/a	n/a	n/a	n/a
n/a	n/a	n/a	n/a	n/a	n/a	n/a	n/a	n/a	n/a	n/a
n/a	n/a	n/a	n/a	n/a	n/a	n/a	n/a	n/a	n/a	n/a
n/a	n/a	n/a	n/a	n/a	n/a	n/a	n/a	n/a	n/a	n/a
n/a	n/a	n/a	n/a	n/a	n/a	n/a	n/a	n/a	n/a	n/a
n/a	n/a	n/a	n/a	n/a	n/a	n/a	n/a	n/a	n/a	n/a
n/a	n/a	n/a	n/a	n/a	n/a	n/a	n/a	n/a	n/a	n/a
n/a	n/a	n/a	n/a	n/a	n/a	n/a	n/a	n/a	n/a	n/a
n/a	n/a	n/a	n/a	n/a	n/a	n/a	n/a	n/a	n/a	n/a
Variation of the observer position for the luminaire distance S										
n/a	n/a					n/a				
n/a	n/a					n/a				
n/a	n/a					n/a				
Standard table	n/a					n/a				
Correction summand	n/a					n/a				
Corrected glare indices referring to 566 lm total luminous flux										

UGR error. Make sure you have installed the LDT editor from Dialux.

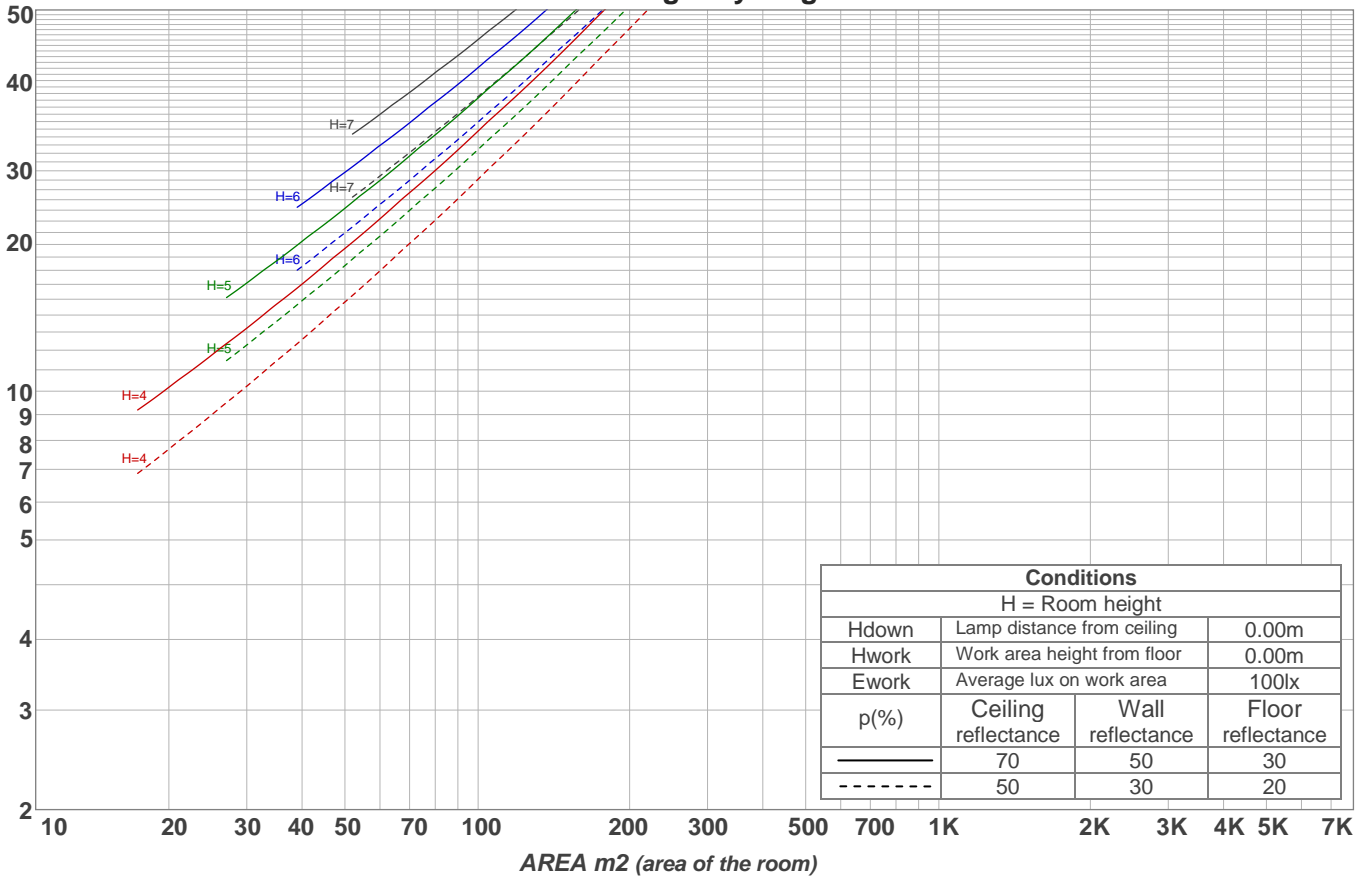
Light planning

Coefficients of Utilization

Ceiling reflectance	80				70				50			30			10			0
Wall reflectance	70	50	30	10	70	50	30	10	50	30	10	50	30	10	50	30	10	0
Floor reflectance	20	20	20	20	20	20	20	20	20	20	20	20	20	20	20	20	20	0
RCR	(RCR: Room Cavity Ratio) Room Values are expressed as percentage of Lumens delivered to the task surface																	
0	119	119	119	119	116	116	116	116	111	111	111	106	106	106	102	102	102	100
1	109	104	99	96	106	101	97	94	97	94	91	93	90	88	89	87	85	83
2	99	90	83	77	96	88	82	76	85	79	75	81	77	73	78	74	71	69
3	90	79	71	64	87	77	70	64	74	68	62	71	66	61	69	64	60	58
4	82	70	61	54	80	68	60	54	66	59	53	63	57	52	61	56	51	49
5	75	62	53	46	73	61	53	46	59	51	46	57	50	45	55	49	45	42
6	69	56	47	40	67	55	46	40	53	45	40	51	45	39	50	44	39	37
7	64	51	42	36	63	50	41	35	48	41	35	47	40	35	45	39	35	33
8	60	46	38	32	58	45	37	32	44	37	31	43	36	31	42	35	31	29
9	56	42	34	28	54	42	34	28	41	33	28	39	33	28	38	32	28	26
10	52	39	31	26	51	38	31	26	37	30	26	36	30	25	36	30	25	23

LAMPS (number of lamps)

Luminaire budgetary diagram



Zonal Lumen Summary

0°-10°	10°-20°	20°-30°	30°-40°	40°-50°	50°-60°	60°-70°	70°-80°	80°-90°
18.0 lm	51.7 lm	79.2 lm	96.9 lm	102 lm	93.8 lm	72.0 lm	40.3 lm	9.63 lm
90°-100°	100°-110°	110°-120°	120°-130°	130°-140°	140°-150°	150°-160°	160°-170°	170°-180°
0.331 lm	0.280 lm	0.271 lm	0.298 lm	0.292 lm	0.259 lm	0.196 lm	0.135 lm	0.044 lm